

PRIMA VISTA LUBBOCK VENUE SPEC SHEET

Address: 402 N. Inler Ave., Lubbock, Texas 79416 · Phone: (806) 392-5729

CAPACITY: 2000 for concert setup, 1000 for banquet setup (tables and chairs)

DRESSING ROOMS/GREENROOM SUITE

- Located on 2nd floor up private staircase on SL
- Suite includes
 - Common space (330 sq. ft.)
 - Sink: y
 - Couch: y
 - Outlets: 4-2 gang
 - Private room (262 sq. ft.)
 - 7-2 gang outlets
 - Locking Door = y
 - Bathroom (80 sq. ft.)
 - Toilet (y)
 - Sink (y)
 - Shower (y)
 - Towels (y)
 - Balconies
 - 2 - Overlooks venue/audience, only accessible from stage

PRODUCTION OFFICE

- Desk, outlet, and chair are provided in greenroom suite
- Optional additional space available with desk, chair, and outlets on 1st floor SL

BARRICADE

- Available upon request and negotiated in production contract

INTERNET

- Name: Rise Broadband
- Password: Supplied on day of event

LAUNDRY: NONE

LOAD-IN LOCATION

- Load-in from East Door, on the backside of building
- Load-in door dimensions: 4'x7'
- Optional large loading bay/door dimensions: 12'x12'
- Push length from load- in door to stage: 50'
- Push length from loading bay to stage: 50'

- 1 turn around ramp within ADA Specs (see stage diagram) 6.7 degrees

BUS PARKING LOCATION

- Bus parking in the rear (East side) of the venue, accessible from the venue road on the south side of the building. Once bus is parked, cones then are used to block access to the area from other vehicles.

SHORE POWER

Bus Connection power box available on southeast side of building.

PRODUCTION INFORMATION

ROOM SIZE: Can use balconies on either side of stage

STAGE DIMENSIONS – See attached drawings

- Length x Width
- Trim Height:
- Ceiling Height:

RISERS

- 2 risers with grey carpeting 8'x 8'

POWER

- 850 Amps to building, 3 - 40-amp circuits on stage, generator feed accessibility to stage.
- 3 Phase connectors available

WINGS

- Wings SL and SR, visible to audience
- See stage diagram for more information

LOADING DOCK - No

RIGGING

- 1 truss above stage 6' in front with plans to add another center stage within 2 months
- Length = 40'
- Capacity = 600 lbs.

SOUND SYSTEM

FOH (see sound spec sheet for full list)

- FOH located upstairs in production booth at rear of venue (120 ft from stage) no exposed cables.
- Space available SL or SR for monitor world in wings
- 6 Powered Monitors
- Behringer X-32 Console FOH, additional X-32 available for monitor world
- 5 x snakes routed under stage
 - See stage diagram for placement and routing info
 - #1 = 8 in 4 out
 - #2 = 8 in 4 out
 - #3 = 8 in 4 out
 - #4 = 12 in 4 out
 - #5 = 12 in 4 out

- Full sound equipment list attached separately

LIGHTING

- PARS: 11 overheads on Truss, 8 floor and wall mounted controlled w/ Venue Tetra Control
- Moving lights: 11 Controlled by I2R Tech
- 2 Spotlights on FOH production booth

SPECIAL EFFECTS/CRYO/PYRO

- Projectors: 3 projection screens 1 above stage (20'x 16') 1 on each side of stage 10'x 16'
- Cryo: Yes
 - Vertical expelled Fog machine
- Pyro:
 - No

MERCHANDISE

- 2 designated merchandise booths/rooms at back of house
- Each booth:
 - LWH: (1) 6'x 10', (2) 6'x12'
 - Outlets: 2-4 gang in each room
 - Lighting: overhead
 - Tables: available

PRIMA VISTA SOUND SPECS

MAINS

- 2 x JBL PRX835W (1500W, 15")
- 6 x JBL SRX835P (2000W, 15")

SUBS

- Yamaha DXS18XLR (1600W, 18")
- 2 x JBL PRX818XLF (1500W, 18")
- JBL SRX828 SP Dual Sub (2000W, 18")
- JBL SRX818SP (2000W, 18")

MONITORS

- 6 x Alto TS315 (2000W, 15")

BOARD

- 2 x Behringer X-32
- S32 32 in/16 out Stage box connectors

MICS

- 6 x SM 57s
- 3 x SM 58s
- Shure BETA 52
- Shure BLX288/PG58 Dual Wireless
- Drums
 - Set of Newer Drum Mics

DIs

- Rolls Stereo DI
- 3 x Behringer Ultra DI 400P
- 2 x ART Tube DI
- LiveWire DI

STANDS

- 4 x weighted short boom stands
- 6 x boom stands
- 2 x strait stands

CABLES

- 40 x XLR cables
- 5 x 1/4" cables
- 4 x RCA -> 1/4" cables

POWER STRIPS

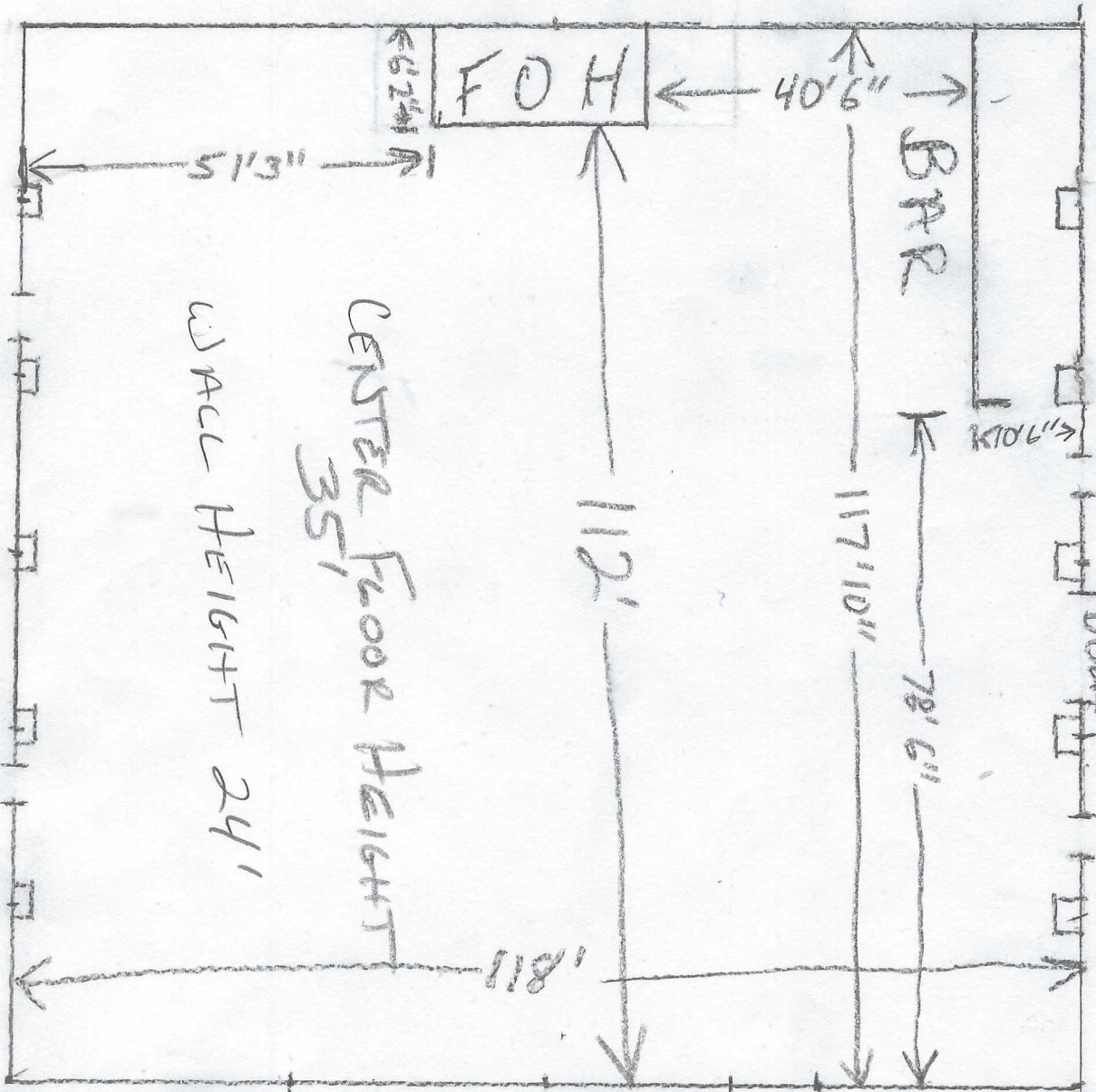
- 5 x power strips spread out over stage area

BACKLINE

- DRUMKIT: Gretch Marque

OPEN SPACE

N



TEMP
ENTRANCE

CENTER FLOOR HEIGHT
35'
WALL HEIGHT 24'

12x12
DOOR

STAGE

PRIMA VISTA

PRIMA VISTA STAGE SPEC'S

